

# HUNTER VALLEY OPERATIONS

## *Plan*

# Bushfire Management Plan

**Document Number:** HVOOC-1797567310-41

**Status:** Approved

**Version:** 4.0

**Effective:** 01/04/2020

**Review:** 01/04/2022

**Owner:** Coordinator - Emergency Response

## Table of contents

<b>1</b>	<b>Purpose .....</b>	<b>4</b>
<b>2</b>	<b>Scope.....</b>	<b>4</b>
<b>3</b>	<b>Objectives .....</b>	<b>4</b>
<b>4</b>	<b>Background.....</b>	<b>4</b>
4.1	Site Description .....	5
4.2	Statutory and Other Requirements .....	5
<b>5</b>	<b>Bushfire Hazard .....</b>	<b>5</b>
5.1	Bushfire Season .....	6
5.2	Bushfire Risk .....	6
<b>6</b>	<b>Planning .....</b>	<b>6</b>
6.1	Fire Awareness and Training .....	6
6.2	Equipment .....	6
6.3	Economic Assets.....	7
6.4	Environmental Assets .....	7
6.4.1	Flora .....	7
6.4.2	Fauna .....	7
6.4.3	Cultural Heritage Sites .....	7
<b>7</b>	<b>Bushfire Management Measures.....</b>	<b>7</b>
7.1	Hazard Management.....	7
7.1.1	Operational Areas .....	8
7.1.2	Non-Operational Areas.....	10
7.1.3	Biodiversity Areas.....	10
7.1.4	Fire Breaks and Trails .....	10
7.1.5	Fire Reduction Burning (Prescribed Burning).....	10
7.1.6	Actions to be Undertaken on Days of Increased Fire Danger .....	10
7.2	Emergency Response .....	11
7.2.1	Fire Detection and Emergency Response.....	11
7.2.2	Fire Suppression .....	11
7.2.3	Communication .....	12
<b>8</b>	<b>Reporting.....</b>	<b>12</b>
<b>9</b>	<b>Review and Improvement .....</b>	<b>12</b>
<b>10</b>	<b>Definitions .....</b>	<b>13</b>
<b>11</b>	<b>Document Information .....</b>	<b>14</b>
11.1	Reference Information.....	14
11.2	Change Information.....	14

12	Appendix A - Mine Access Points .....	15
13	Appendix B - Key Infrastructure.....	16
14	Appendix C - Environmental Monitoring Locations and Hazards .....	17
15	Appendix D - Fire Services Block Plans .....	18
16	Appendix E - Consultation Singleton Council .....	23
17	Appendix F - RFS.....	24
18	Appendix G - Key Contacts (internal use only).....	25

# 1 Purpose

The purpose of this plan is to identify bushfire threat, assets at risk, and provide the preventative measures to be undertaken to protect human life and minimise impacts on property from the threat of a bushfire.

Hunter Valley Operations (HVO) requires effective measures to be put in place to prepare for, mitigate, control and recover from incidents which have the potential to affect or disrupt the business and/or its operations. Measures related to bushfire management are detailed in this Plan.

# 2 Scope

The plan applies to all land within the HVO boundary, including operational and non-operational areas, and buffer lands. The location of the HVO boundaries is located in Appendix A.

# 3 Objectives

The objectives of the Bushfire Management Plan are to:

- mitigate risk of bushfire outbreak;
- mitigate risk to all personnel;
- protect and minimise damage to assets;
- manage ignition sources on site;
- minimise impact to surrounding neighbours;
- reduce the number of human-induced bush fire ignitions that cause damage to life, property and the environment;
- manage fuel to reduce the rate of spread and intensity of bushfires, while minimising environmental / ecological impacts;
- reduce the community's vulnerability to bush fires by improving its preparedness; and
- effectively contain fires with a potential to cause damage to life, property and the environment.

# 4 Background

This Bushfire Management Plan has been prepared for HVO in accordance with:

- Schedule 3, Conditions 59 and 60 of HVO South Project Approval 06\_0261;
- Schedule 3, Conditions 60 and 61 of the HVO North Development Consent 450-10-2003; and
- NSW Rural Fire Service Mining Industry Fact Sheet for Bush Fire Management Plans.

Bushfire is a significant land management issue in the Hunter Valley. Glencore has a duty as a landowner under Section 63(2) of the *Rural Fires Act 1997* (RF Act) to prevent occurrence of bushfires, and minimise danger of the spread of bushfires on the land that they manage.

## 4.1 Site Description

Hunter Valley Operations (HVO) is an open cut coal mine located near Singleton, in the Hunter Valley, New South Wales. The total landholding for HVO is approximately 14,000 ha, including mine lease areas and surrounding buffer lands. HVO is comprised of a large amount of bush land.

HVO comprises HVO north and HVO south, divided by the Hunter River.

## 4.2 Statutory and Other Requirements

### HVO North Development Consent (DA 450-10-2003)

#### **Bushfire Management**

60. *The Applicant must: (a) ensure that the development is suitably equipped to respond to any fires on-site; and (b) assist the Rural Fire Service and emergency services as much as possible if there is a fire onsite during the development.*

61. *The Applicant must ensure that the Bushfire Management Plan for the site is to the satisfaction of Council and the Rural Fire Service.*

### HVO South Project Approval (PA 06\_0261)

#### **Fire Control**

59. *During the project, the Proponent must: (a) ensure that it maintains suitable equipment to respond to any fires on site; and (b) assist the rural Fire service and emergency services as much as possible if there is a fire on site.*

60. *The Proponent must ensure that it maintains a Fire Management Plan for the site, in consultation with Council and the Rural Fire Service.*

The NSW Department of Trade & Investment (Mine Safety), and other Work Health and Safety (WHS) legislation, outline the requirements for mine sites to develop an emergency response plan. The plan acts as a guideline for the management of emergencies on site, including the threat of bushfires.

Glencore is committed to bushfire hazard mitigation as outlined in the Glencore Coal Assets Australia (GCAA) *Land and Property Management Protocol (11.15)*.

## 5 Bushfire Hazard

The biggest threat to HVO is both bush and grass fire, with the risk to site dependent on both the location of the initial ignition point and fuel loads at the time of the fire.

The Singleton Bushfire Management Committee (BFMC) Bush Fire Risk Management Plan (2011) identifies that the Upper Hunter Valley area experiences major fires on a regular basis due to the historical occurrence of hot north westerly winds combined with ignitions caused by dry lightning storms. Fires generally travel in a south-easterly direction under the influence of those winds.

Hazards caused by bushfire may include:

- Intense heat and flames
- Smoke
- Embers
- Potential for power and water to be cut off
- Reduced visibility
- Potential for isolation

## 5.1 Bushfire Season

The bushfire season for the Hunter Valley District is from the 1st of September to the 31st of March inclusive. This is a permanent variation from the statutory requirements of 1 October each year.

## 5.2 Bushfire Risk

The main risk to the mining industry is from airborne burning embers from nearby bushfires falling onto buildings, stockpiles or infrastructure, and setting them alight. There is also risk of bushfires in adjacent bushland spreading onto the site.

The following is a list of risks that may cause the ignition of a bush/grass fire on, or around the mine site:

- lightning
- arson
- rail lines and maintenance of same; e.g. rail grinding
- power lines
- hot works in bushland area
- spontaneous combustion
- illegal burning activities
- vehicle dumping and ignition

Activities with a high potential to cause ignition of bushfires such as welding, oxy cutting, frictional cutting etc. not being undertaken in a designated hot work area. These activities are controlled at HVO using a GCAA mandated Hot Work Permit system.

# 6 Planning

## 6.1 Fire Awareness and Training

This plan will be communicated to, and made available to, personnel having a responsibility under the plan.

The HVO Emergency Services Officers and Emergency Response Team are trained in emergency response, including bushfire.

Operators of equipment are trained in the use of portable fire extinguishers, as per the HVO Health and Safety, and *Australian Standard (AS) 5062, Fire Protection for Mobile and Transportable Equipment* requirements.

Site water carts are equipped with firefighting monitors as well as hose reels, and respond to bushfire incidents as required.

The HVO emergency response team endeavour to meet with the RFS from time to time to discuss bushfire management strategies.

## 6.2 Equipment

Various types of equipment able to respond to a bushfire incident are available across HVO, and include (but are not limited to):

- 4 wheel drive firefighting appliances
- Water carts

- Dozers
- Portable fire extinguishers, fire suppression units, fire depots

## 6.3 Economic Assets

The following is a list of economic mine assets that may be threatened by bushfire:

- overland conveyer belts
- power lines and power poles
- substations
- water pipe lines
- Coal Handling Preparation Plants (CHPP's)
- coal train loading facilities
- fuel farms and other hydrocarbon / chemical storage areas
- explosives magazines
- communications tower
- offices and other buildings on operational areas
- monitoring equipment, including environmental, blasting etc
- buffer lands including agricultural land, buildings, water tanks etc.
- boundary fences

## 6.4 Environmental Assets

### 6.4.1 Flora

The site has a history of cattle grazing, mining activity, and other associated land uses which have resulted in large areas of pastoral grassland or general land clearing. Remnants of regrowth woodland with varying levels of disturbance occur in patches. Vegetation surveys have been conducted on the site, with vegetation communities listed under State and Commonwealth legislation identified.

### 6.4.2 Fauna

Several threatened fauna species or their habitat have been recorded on site, including both birds and amphibians. Refer to the HVO Integrated Biodiversity Management Plan for more details.

### 6.4.3 Cultural Heritage Sites

A number of Aboriginal and European cultural heritage sites exist across both HVO north and HVO south. Refer to the HVO Aboriginal Cultural Heritage Management Plan, as well as Heritage Management Plan, for more details.

# 7 Bushfire Management Measures

## 7.1 Hazard Management

Management of lands must be undertaken in accordance with the appropriate licence conditions and legislation.

Under the RFS Act, the RFS has the power to direct landholders, including HVO to undertake hazard reduction activities on their property.

## 7.1.1 Operational Areas

### 7.1.1.1 Access to Site

Main access points to the mine site, as outlined in Appendix A, are via:

- 1) The main entrance, which is off the Lemington Road, Lemington.
- 2) The Howick/West Pit entrance (travelling from Singleton):
- 3) South Entrance (via Comleroi / Archerfield Road)

### 7.1.1.2 Site Security

Access to the sites are via a boom gate, and by approved and authorised personnel only. Site emergency response personnel will meet emergency services at these gates in the instance where emergency services are called to respond to a bushfire emergency on operational areas.

### 7.1.1.3 Management and Mitigation Measures

Large operational equipment are installed with fire suppression systems. Building infrastructure is protected with ring mains and pillar hydrants.

Fire detection systems are located installed as per *AS 1670.1-2004 Fire Detection, Warning, Control and Intercom Systems – System Design, Installation and Commissioning*, and locations are identified via a risk based approach. Fire Services Block Plans are located in Appendix D.

Personnel working across HVO are trained in basic emergency response procedures when they undertake the HVO site familiarisation induction.

Bushfire mitigation measures are undertaken within operational areas, outlined in **Table 7-1**.

Actions for mitigation measures are documented within CMO.



Table 7-1 – Operational Area Bushfire Mitigation Measures

Task	Purpose	Frequency	Responsibility
Inspect and maintain operational area fire trails and breaks	Improve access for fire control / response and management tasks	Annually, prior to fire season (August)	Maintenance Superintendent – Infrastructure and Projects
Inspect, install and maintain signage for main intersections, and gates of firebreak trails	Aid emergency navigation	Annually, prior to fire season (August)	Maintenance Superintendent – Infrastructure and Projects
Inspect and maintain areas surrounding administration buildings, workshops, crib huts and external roads	Reduce fuel loads and mitigate bushfire risk potential	Quarterly	Maintenance Superintendent – Infrastructure and Projects
Inspect and maintain areas around power poles, switch yards, transformers, air break switches, and substations	Reduce fuel loads and mitigate bushfire risk potential	Quarterly	Supervisor Electrical Services / Maintenance
Inspect and maintain areas around powerlines	Reduce fuel loads and mitigate bushfire risk potential	Annually	Supervisor Electrical Services / Maintenance
Inspect and maintain areas around CHPP and load points	Reduce fuel loads and mitigate bushfire risk potential	Regular, as required	CHPP General Works Supervisor
Inspect and maintain HC1 conveyor	Reduce fuel loads and mitigate bushfire risk potential	Annually	CHPP General Works Supervisor
Inspect and maintain workshops	Reduce fuel loads and mitigate bushfire risk potential	Every 4 months	Maintenance Services Planner
Inspect and maintain water hydrant and pump function	Aid in fire response and control	Contractual – covered by Fire Service Providers	Maintenance Superintendent – Infrastructure and Projects
Report any instances of bushfire outbreak to supervisor / manager, or raise emergency alarm	Rapid response	As required	All personnel and contractors
Review Bushfire Management Plan including currency of information including maps, access routes)	Rapid response by site emergency response team	Annually, within 3 months of submission of Annual Review	Co-Ordinator – Emergency Response in conjunction with Environment and Community Team
Bushfire reporting in the Annual Review	Approval requirement	Annually	Environment and Community Team

## 7.1.2 Non-Operational Areas

### 7.1.2.1 Management and Mitigation Measures

Bushfire mitigation measures are undertaken on non-operational areas, and are outlined in Table 7-2.

*Table 7-2 – Non-Operational Area Bushfire Mitigation Measures*

Task	Purpose	Frequency	Responsibility
Report any instances of bushfire outbreak to supervisor / manager, or raise emergency alarm	Rapid response	As required	All personnel and contractors
Inspect and maintain non-operational fire trails and breaks	Improve access for fire control / response and management tasks	Annually, prior to fire season (by August)	Environment and Community Team
Inspect, install and maintain signage for gates or firebreak trails	Aid emergency navigation	Annually, prior to fire season (by August)	Environment and Community Team
Review fuel loads and complete necessary reduction including areas adjacent to neighbouring properties	Assess need for hazard reduction activities	Annually, prior to the fire season (by August)	Environment and Community Team

## 7.1.3 Biodiversity Areas

Bushfire management measures within biodiversity areas have been addressed in specific biodiversity area bushfire management plans, and will not be discussed within this plan.

## 7.1.4 Fire Breaks and Trails

Defined fire breaks and trails are included in the HVO Access, Infrastructure, Monitoring Location and Hazard Maps, Appendix A, B and C respectively.

## 7.1.5 Fire Reduction Burning (Prescribed Burning)

No fuel hazard reduction burning is planned for the mine site. If any future fuel hazard reduction burning is to be considered it will be with and in direct consultation and approval of the Rural Fire Service.

Any fuel hazard reduction burns will be planned in accordance with the Bush Fire Environmental Assessment Code for New South Wales (NSW Rural Fire Service, February 2006) and the guidelines contained in the Threatened Species Hazard Reduction Lists for the Bush Fire Environmental Assessment Code.

Current recommendations under the Code are:

- in woodland vegetation, fire should not occur within 5 years of a previous fire and consideration should be given to burning within 40 years of any previous fire; and
- in grassland vegetation derived from the woodland vegetation, the recommended fire intervals are the same as woodland vegetation.

## 7.1.6 Actions to be Undertaken on Days of Increased Fire Danger

Hot work should be limited to *essential* work during a Total Fire Ban. The 'Hazardous Hot Work' section of the GCAA Hot Work Permit must be used when a total fire ban is in place.

## 7.2 Emergency Response

### 7.2.1 Fire Detection and Emergency Response

If a bush or grass fire is identified within the operational area, or buffer lands of HVO, the HVO Emergency Notification Procedure as per the HVO ERP must be initiated.

1. Ensure the immediate safety of everyone.
2. Advise:
  - By radio – Press RED button on radio, then press PTT Key (Push to Talk) to speak; OR
  - By telephone – 2222 or (02) 65700222 for Dispatch
3. Say - **EMERGENCY, EMERGENCY, EMERGENCY**
4. Then state clearly:
  - Your name
  - Nature of the emergency
  - Location of emergency
  - What assistance is required
5. Dispatch will:
  - Notify the Shift Emergency Services Officer (ESO) on duty
  - Notify Mining OCE or area supervisor
  - Await further instructions from the ESO and OCE or area supervisor
6. If required, evacuate the area and assemble at your emergency muster point

The RFS will have a lead role in emergency response for HVO. However, due to the potential for the presence of explosive material, Fire & Rescue NSW may also be involved if a HAZMAT is declared. A HAZMAT event will be coordinated by Fire & Rescue NSW.

In the event of a bushfire occurring across HVO, the operational priorities are for:

1. The safety of personnel
2. The effective protection of human life and community assets
3. The conservation of biodiversity and cultural heritage
4. The cost effectiveness of strategies.

### 7.2.2 Fire Suppression

If trained, competent and confident, in the event of a small fire, HVO personnel may attempt to suppress the fire with portable fire extinguishers and earth moving machinery.

The ESO, or an authorised person is to:

- conduct initial size up and assessment of the fire, if safe to do so
- notify NSW Rural Fire Service
- assess the intensity of the fire, the type and amount of fuel, weather conditions and topography, if safe to do so
- attempt to extinguish fire, if safe to do so

- if fire is beyond control, move all personnel and equipment to safety, and await arrival of external emergency service crews
- monitor the progress of the fire from a safe distance and give the NSW Rural Fire Service Situation Reports
- if required, evacuate personnel to the relevant designated emergency muster points
- hand over to the NSW RFS where required.

### 7.2.3 Communication

In the event of an emergency, the Incident Management Team (IMT) may be initiated and establish a central control base in the Main Administration Building.

Once the emergency response has been initiated, duty cards will be distributed to members of the IMT. The duty cards outline roles and responsibilities of key personnel in the event of an emergency, whilst aligning with the Australasian Inter-Agency Incident Management Systems (AIIMS) methodology to aid in the transition of incident handover to external government agencies such as the NSW Rural Fire Service, should it be required.

All information requested by external parties, including the media and regulatory authorities is to be forwarded onto the Glencore Media and Communications Manager. The Media and Communications Manager will liaise with HVO General Manager over information that can be released to the public and other stakeholders (Key contacts are outlined in Appendix F).

## 8 Reporting

Any incidents or complaints relating to bushfire across HVO will be reported in CMO, and in the Annual Review.

## 9 Review and Improvement

This plan is to be reviewed within 3 months of the:

- Submission of an incident report
- Submission of an annual review
- Submission of an independent audit report
- Approval of a modification to the HVO north development consent.

This plan will be sent to Singleton Council and the Rural Fire Service for comment.

## 10 Definitions

*Table 10-1 – Definitions*

Term	Definition
Asset	Anything valued by the operation or community and includes houses, buildings, infrastructure, equipment, crops, livestock, cultural sites, heritage sites, general environment, businesses, and surrounding forests.
Bushfire	A general term used to describe fire in vegetation, including grass fire.
Bushfire Hazard	The potential severity of a bushfire, which is determined by fuel load, fuel arrangement and topography, under a given climatic condition.
Bushfire Risk	The chance of a bushfire igniting, spreading, and causing damage to the community or the assets they value.
Fire Fighting Authorities	The NSW Rural Fire Service, NSW Fire Brigades, the National Parks and Wildlife Service and Forests NSW.
Prescribed Burn	A controlled burn undertaken to meet a defined fuel management purpose with a prescription outlining intended frequency, fire behaviour and fuel reduction targets.

# 11 Document Information

## 11.1 Reference Information

Reference information, listed in the table below, is information that is directly related to the development of this document or referenced from within this document.

*Table 11-1 – References*

Reference
<i>S63 of the Rural Fires Act 1997</i>
<i>DA 450-10-2003</i>
<i>AS1670.1-2004 Fire Detection, Warning, Control and Intercom Systems – System Design, Installation and Commissioning</i>
<i>AS5062, Fire Protection for Mobile and Transportable Equipment</i>
<i>GCAA Land and Property Management Protocol (11.15)</i>
<i>2018 NSW RFS Fact Sheet for Bushfire Management Plans</i>

## 11.2 Change Information

Full details of the document history are recorded in the document control register, by version. A summary of the current change is provided in table below.

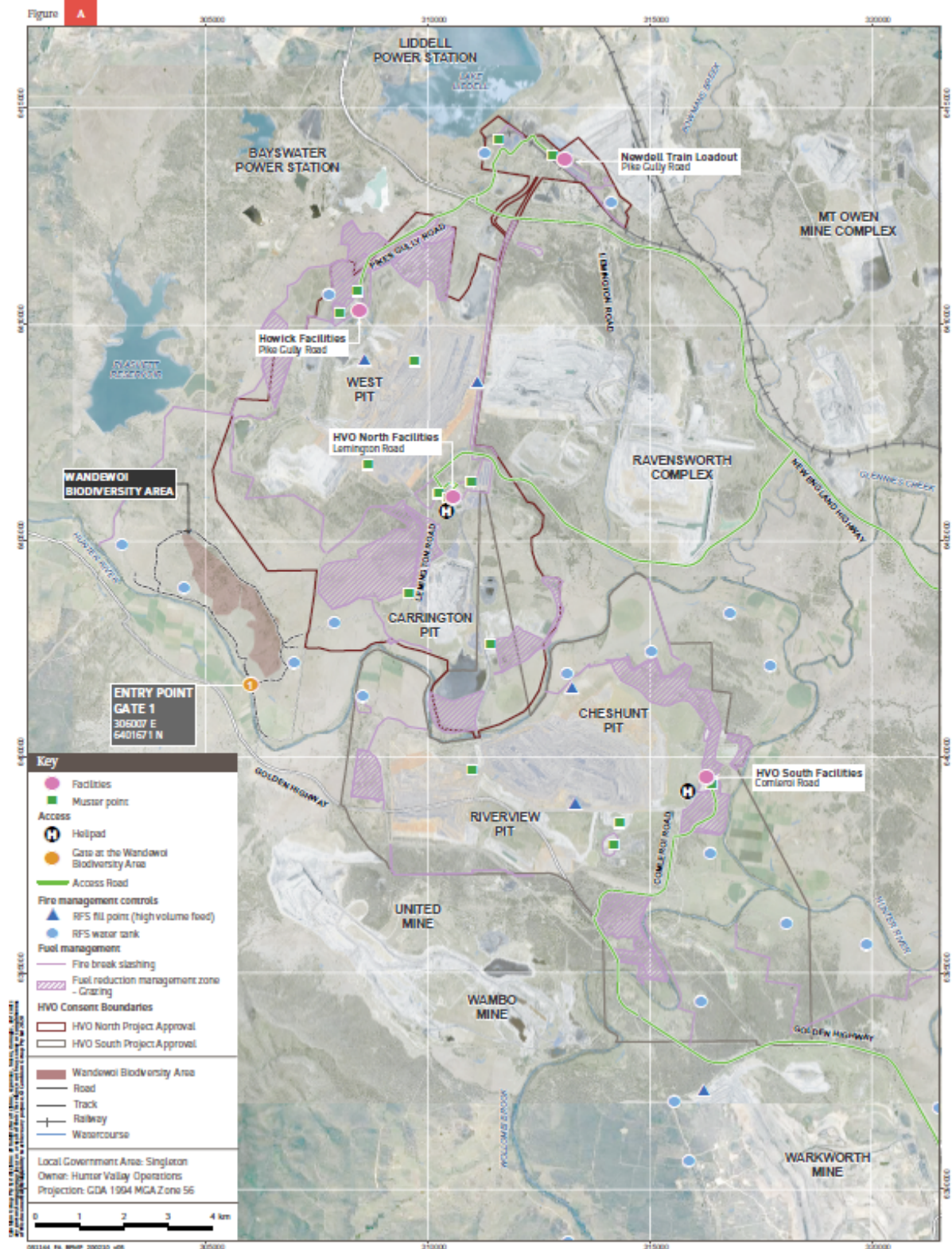
*Table 11-2 – Change Information*

Version	Date	Review Team	Details of Change
4.0	01/04/2020	<i>Paul Scrace and Peter Bowman</i>	<i>Update HVO template, remove references to MTW, and update currency of information, in line with the NSW RFS Fact Sheet for Bush Fire Management Plans.</i>

# 12 Appendix A - Mine Access Points

## Hunter Valley Operations

Access and fire management controls at Hunter Valley Operations  
Bushfire Management Plan

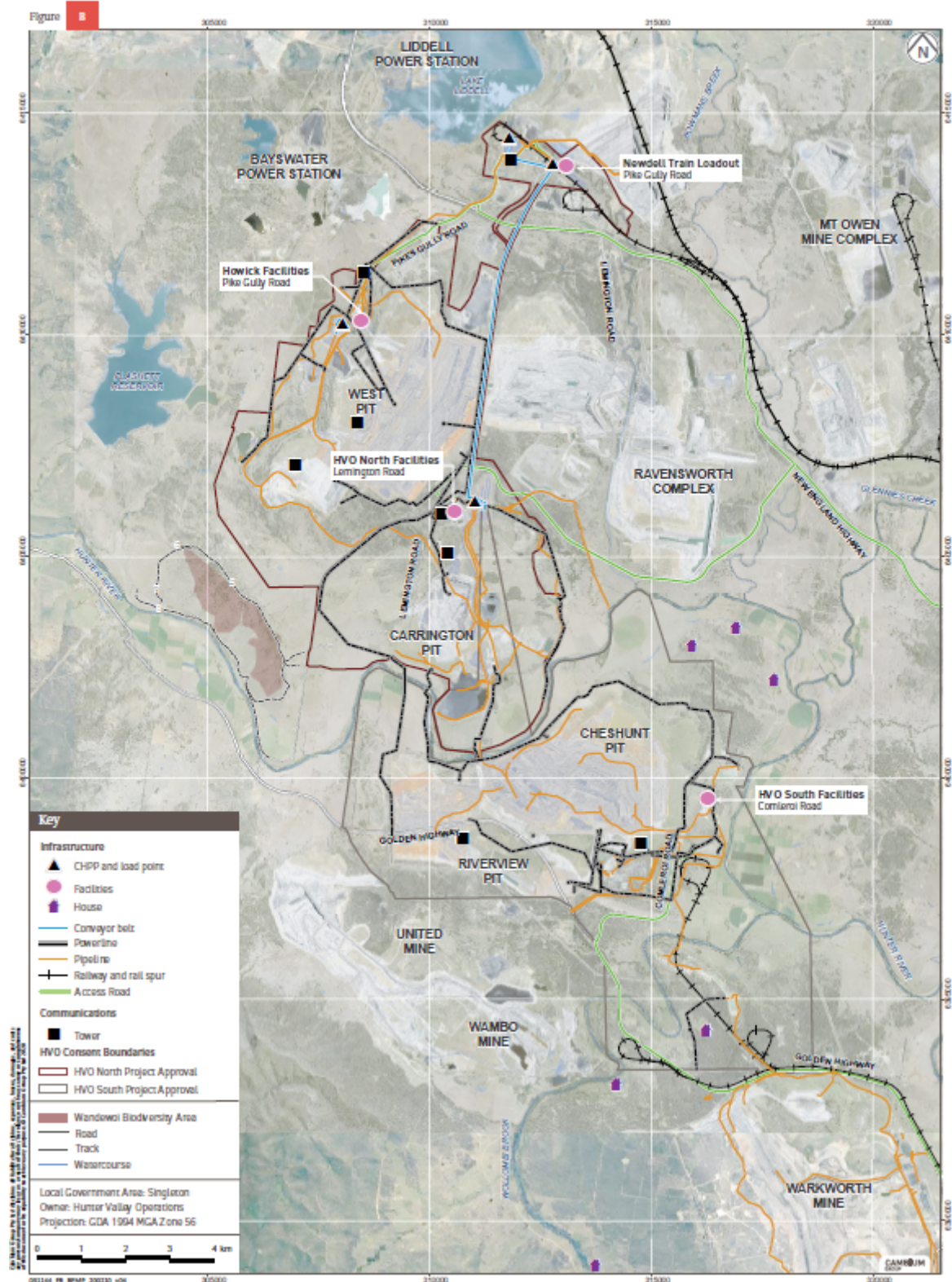




# 13 Appendix B - Key Infrastructure

## Hunter Valley Operations

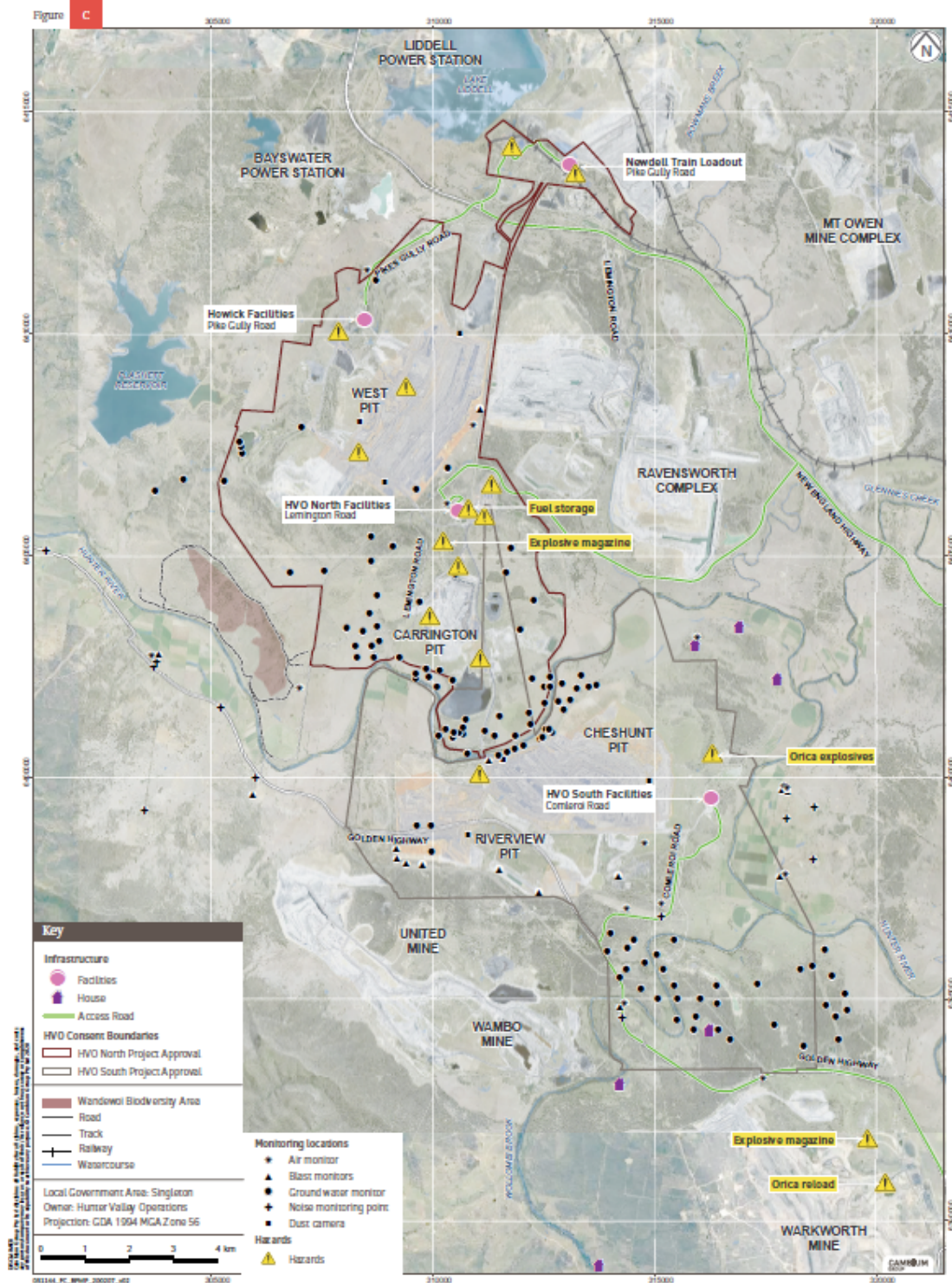
Key Infrastructure at Hunter Valley Operations  
Bushfire Management Plan



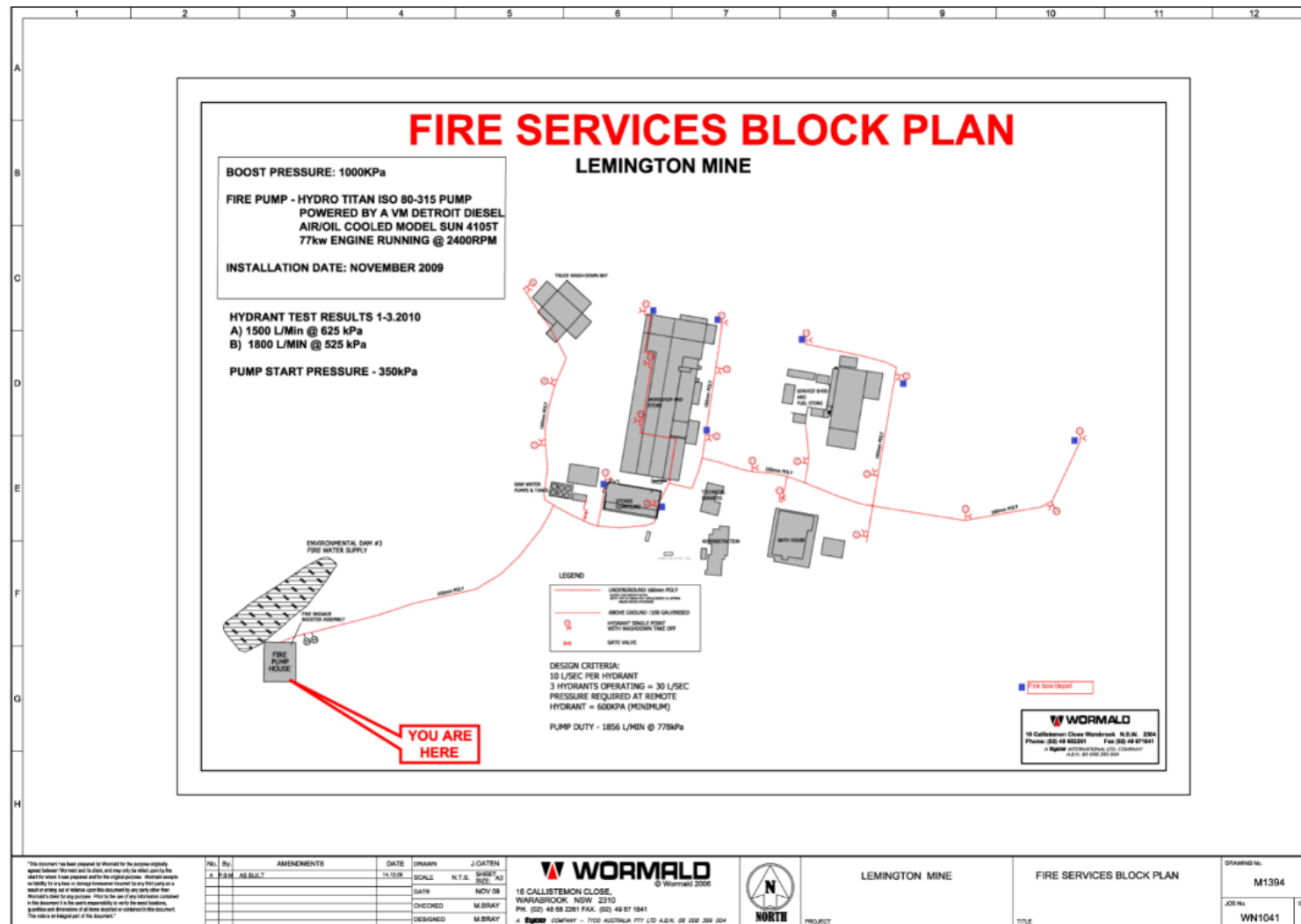


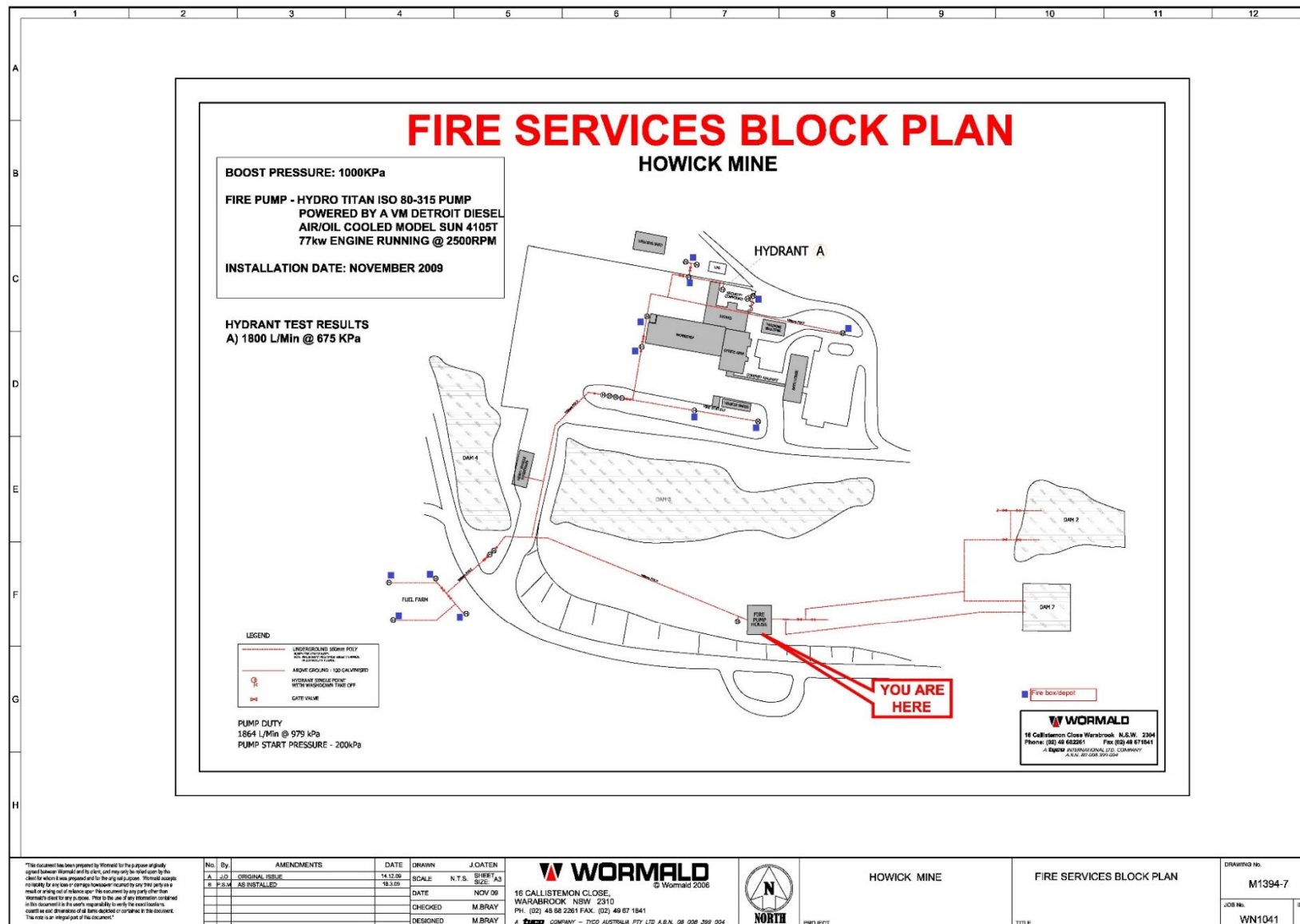
# 14 Appendix C - Environmental Monitoring Locations and Hazards

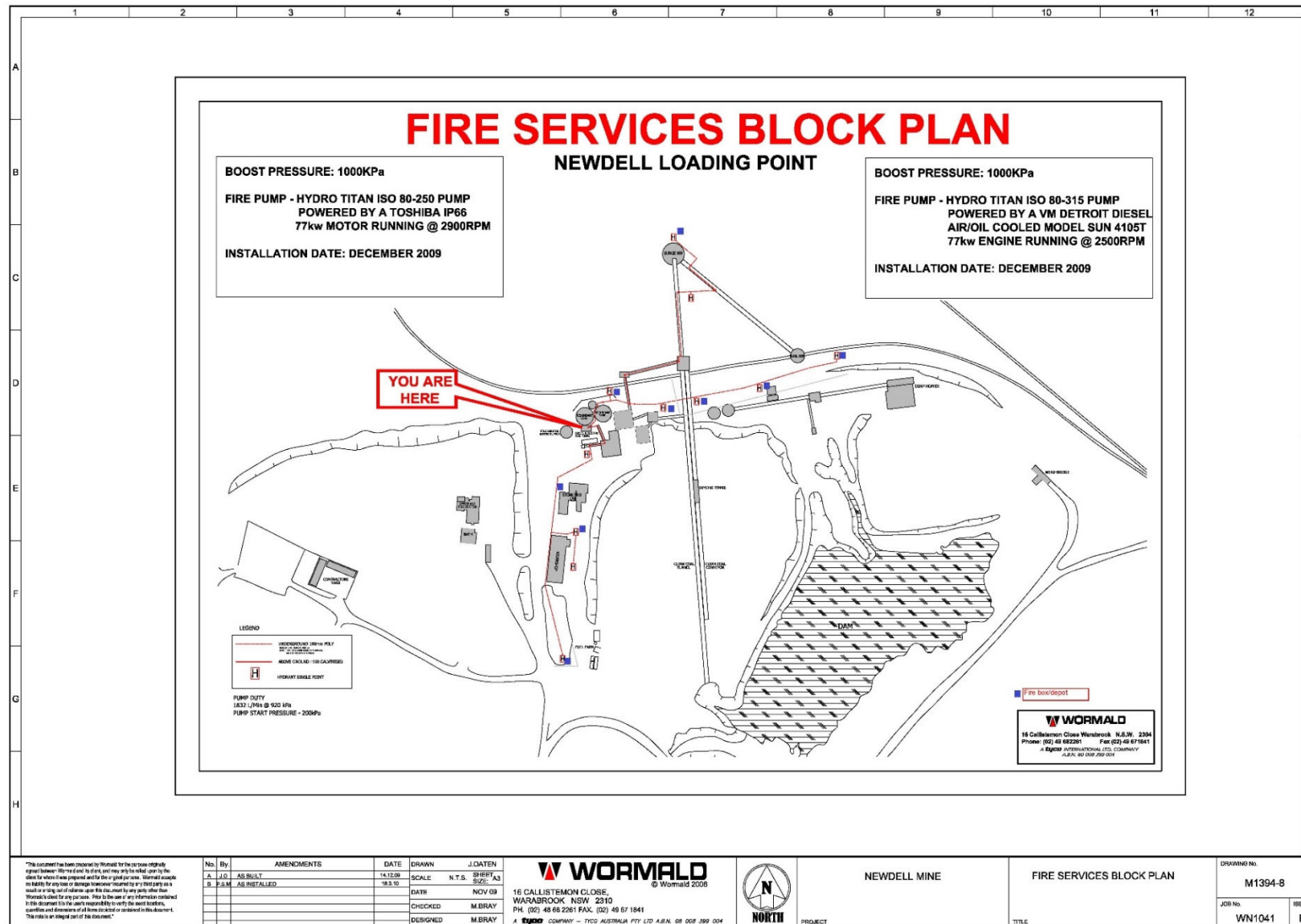
Hunter Valley Operations

Environmental monitoring locations and hazards at Hunter Valley Operations  
Bushfire Management Plan

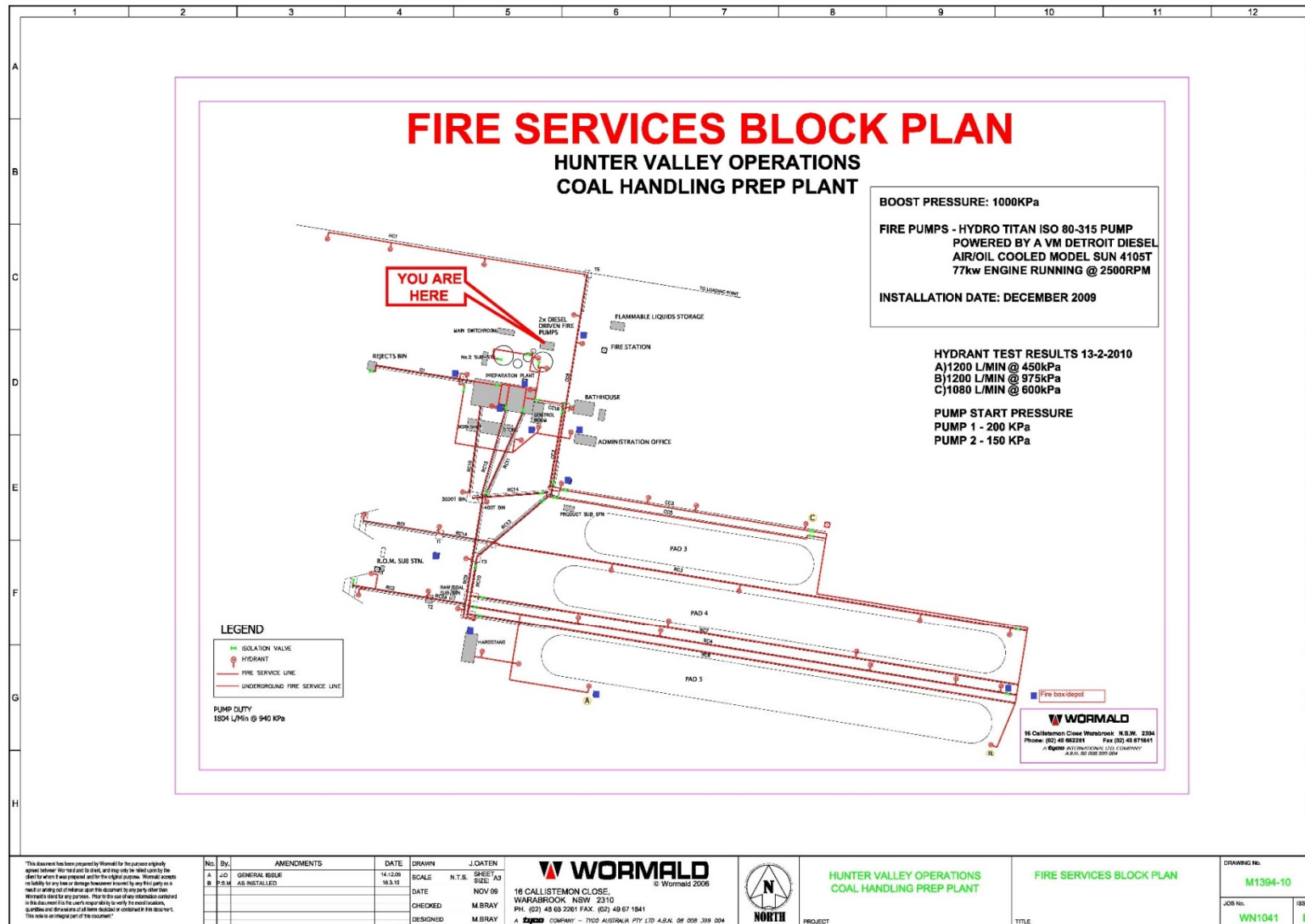
# 15 Appendix D - Fire Services Block Plans

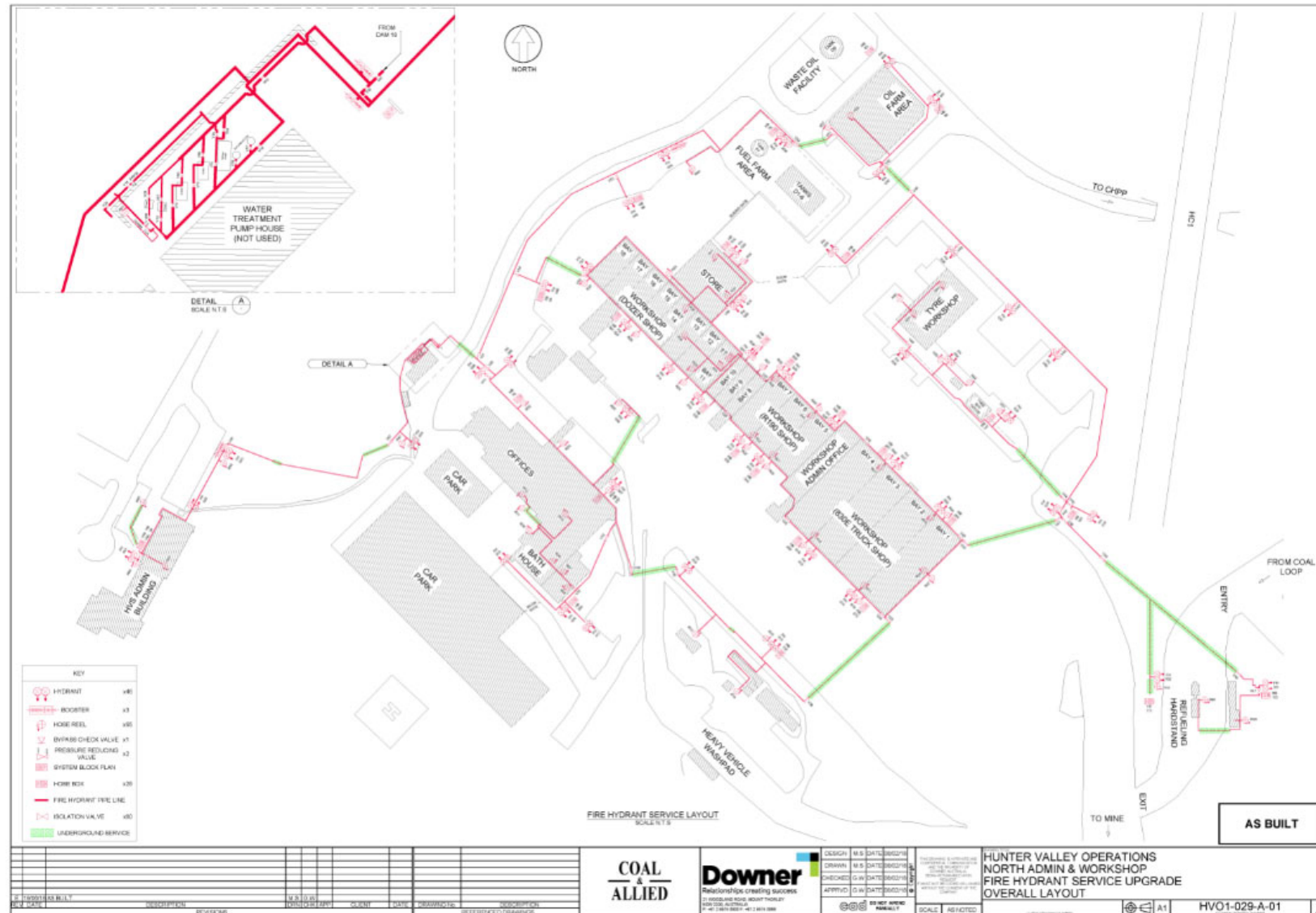












# 16 Appendix E - Consultation Singleton Council

**Brown, Trescinda (Hunter Valley Operations - AU)**

**From:** Ihlein, Mark <mihlein@singleton.nsw.gov.au>  
**Sent:** Wednesday, 15 January 2020 6:02 AM  
**To:** Speechly, Andrew (Hunter Valley Operations - AU)  
**Cc:** Jeffery, Jodie  
**Subject:** Re: Contact for Bushfire Management Plan

—External sender—

Hi Andrew

Happy new year to you - hope all is well

We have reviewed the document - no issues from a Council perspective.

Regards  
Mark

Sent from my iPhone

On 14 Jan 2020, at 8:08 am, "Andrew.Speechly@hvo.com.au<mailto:Andrew.Speechly@hvo.com.au>" <Andrew.Speechly@hvo.com.au<mailto:Andrew.Speechly@hvo.com.au>> wrote:

Hi Mark

Just checking if Council would like to make comment on this plan before we submit to DPIE at the end of this week. Appreciate if you can send a note for our records. We have feedback from the RFS, which I have attached for your reference.

Regards

Andrew

**From:** Scrace, Paul (Hunter Valley Operations - AU) <Paul.Scrace@hvo.com.au<mailto:Paul.Scrace@hvo.com.au>>  
**Sent:** Friday, 29 November 2019 1:39 PM  
**To:** mihlein@singleton.nsw.gov.au<mailto:mihlein@singleton.nsw.gov.au>  
**Cc:** jshelley@singleton.nsw.gov.au<mailto:jshelley@singleton.nsw.gov.au>; Speechly, Andrew (Hunter Valley Operations - AU) <Andrew.Speechly@hvo.com.au<mailto:Andrew.Speechly@hvo.com.au>>  
**Subject:** FW: Contact for Bushfire Management Plan

Hi Mark

Please find attached our draft Bushfire management Plan. Could you please review and if at all possible within the next 2-3 weeks send back any changes that may need to be made to Andrew Speechly.

Thanks.

Regards.

Paul Scrace | Coordinator Emergency Response Hunter Valley Operations  
POSTAL: PO Box 315 Singleton 2330 Australia  
T: +61 (0) 2 6570 1179 M: +61 (0) 429 121 871  
EMAIL: Paul.Scrace@hvo.com.au<mailto:Paul.Scrace@hvo.com.au>  
WEBSITE: [www.hvo.com.au](http://www.hvo.com.au)<<http://www.hvo.com.au>>

\*\*\*\*\*  
LEGAL DISCLAIMER. The contents of this electronic communication and any attached documents are strictly confidential and they may not be used or disclosed by someone who is not a named recipient.

# 17 Appendix F - RFS

## Brown, Trescinda (Hunter Valley Operations - AU)

**From:** Leanne Bell <Leanne.Bell@rfs.nsw.gov.au>  
**Sent:** Friday, 10 January 2020 2:09 PM  
**To:** Scrace, Paul (Hunter Valley Operations - AU)  
**Cc:** Speechly, Andrew (Hunter Valley Operations - AU)  
**Subject:** RE: Bushfire Management Plan  
**Attachments:** Fact Sheet - Mining Industry - Bush Fire Management Plans.pdf

### External sender

Hi Paul,

Thanks for a copy of your plan and map for your Bush Fire Management Plan. I have been on deployment since early October and have not seen my desk for some time. I'm not going to have the time to provide feedback on your plan in the near future. It would be beneficial to both organisations that in future, Bush Fire Management Plans are submitted prior to the 1<sup>st</sup> September, the beginning of Fire Season.

Attached is a fact sheet for the Mining Industry on Bush Fire Management Plans, please review and ensure that the correct details are included in your plan. The most common error in the plans are:

- Bush Fire Danger Period – for the Hunter Valley area (Singleton & Muswellbrook LGA's) this is 1<sup>st</sup> September to 31 March
- Bush Fire Management Committee name – Hunter Valley Bush Fire Management Committee
- Fire weather area – Greater Hunter
- NSW RFS district – Hunter Valley District
- Contact Phone number business hours – 6575 1200

If you make changes to your plan as a result of this fact sheet, please record them in the consultation section of your plan and then re-send to me for our records.

Thanks and regards  
 Leanne



**Leanne Bell** | Operational Officer | Hunter Valley  
**NSW RURAL FIRE SERVICE**  
 2161 Putty Road Bulga NSW 2330 | PO Box 3111 Singleton NSW 2330  
**P** 02 6575 1200 **F** 02 6575 1200 **M** 0428 343 402 **E** [Leanne.Bell@rfs.nsw.gov.au](mailto:Leanne.Bell@rfs.nsw.gov.au)  
[www.rfs.nsw.gov.au](http://www.rfs.nsw.gov.au) | [www.facebook.com/nswrfs](https://www.facebook.com/nswrfs) | [www.twitter.com/nswrfs](https://www.twitter.com/nswrfs)  
**PREPARE. ACT. SURVIVE.**

**From:** [Paul.Scrace@hvo.com.au](mailto:Paul.Scrace@hvo.com.au) <[Paul.Scrace@hvo.com.au](mailto:Paul.Scrace@hvo.com.au)>  
**Sent:** Friday, 29 November 2019 1:42 PM  
**To:** Leanne Bell <[Leanne.Bell@rfs.nsw.gov.au](mailto:Leanne.Bell@rfs.nsw.gov.au)>  
**Cc:** [Andrew.Speechly@hvo.com.au](mailto:Andrew.Speechly@hvo.com.au)  
**Subject:** Bushfire Management Plan

Hi Leanne

Please find attached our draft Bushfire Management Plan. Could you please review and if at all possible within the next 2-3 weeks send back any changes that may need to be made to Andrew Speechly.

Thanks.

Regards.



# 18 Appendix G - Key Contacts (internal use only)

**Table 18-1 – Site Based Contacts**

Role	Contact Number
HVO Emergency Phone (Dispatch)	02 6570 2222 (Landline) 2222 (Internal phone line)
HVO Emergency Services Officer – Primary contact	0427 436 314
Shift ESO – Secondary contact	0436 007 427
General Manager	02 6570 0228
Manager Health and Safety	0418 265 045
HVO Reception	02 6570 0300

**Table 15-2 – External Emergency Services and Utility Contacts**

Organisation/Utility	Location	Contact Number
Emergency (Police, Fire, Ambulance)	Australia Wide	<b>000</b>
State Emergency Services	Singleton	02 6572 4669
Mines Rescue	Singleton	02 6573 9000, 02 6573 2999
Police	Singleton	02 6578 7499
Police	Muswellbrook	02 6542 1399
Fire and Rescue NSW	Muswellbrook	02 6541 2846
Fire and Rescue NSW	Singleton	02 6572 1495
NSW Rural Fire Service (24hr)	Bulga	02 6574 5397
NSW Rural Fire Service	Bulga	02 6575 1200
Hospital	Muswellbrook	02 6542 2000
Hospital	Singleton	02 6571 9222
Telecommunications	Telstra	131 191
Power	Energy Australia	131 388
Gas	BOC	1800 653 572
Water	Hunter Water	1300 657 000
Sewerage	Hunter Water	1300 657 000
Fuel	Caltex	1800 033 111

**Table 15-3 – Buffer Property (Rural) Tenant Contacts**

<b>Name</b>	<b>Address</b>
BFL & TL Parrey	"Archerfield Dairy", 308 Archerfield Access
BFL & TL Parrey	"Dam Paddock", Archerfield Road
Reginald Greg Nichols	"Lemington Paddocks", Archerfield Road
Phil Baker	"Cheshunt Park", 294 Barrys Access
Phil Baker	"Cheshunt Park", 400 Barrys Access
Phil Baker	"Cheshunt Flats", 400B Barrys Access
Phil Baker	"Cheshunt Farm", Barrys Access
Phil Baker	"Burnumwood Flats", Barrys Access
Vacant	"Appleyard Farm", 2 Comleroi Road
PW & BM Nichols	16 Comleroi Road
PW & BM Nichols	"Hunter Valley North", Lemington Road
Colinta Holdings Pty Ltd	"Riverview" Lemington, Lemington Road
Colinta Holdings Pty Ltd	"Ollenberry", 1561 Lemington Road
Colinta Holdings Pty Ltd	"Wandewoi", Lemington Rd
Colinta Holdings Pty Ltd	"Carrington West", Lemington Road
Colinta Holdings Pty Ltd	"Carrington Stud", Jerry's Plains Road
Vacant	"Nichols" Golden Highway
Colinta Holdings Pty Ltd	Barrellan BB2, Jerry's Plains Road
Clay Target Club	1188 Golden Hwy
Singleton District Motorcycle Club	Old New England Highway
Michael Hassett	Eyrie Bower & Curlewis", 186 & 152 Knodlers Lane
Michael Hassett	"Greenleek", 17 WA Long Point Road
Merv and Sue Barry	"Stafford" & "Hornes", 85 & 237 WA Long Point Road

**Table 15-4 – Tenant Contacts**

<b>Name</b>	<b>Address</b>
Vacant (ESO fire training)	"Shearers Cottage", 148 Archerfield Access
BFL & TL Parrey	"Archerfield" Homestead, 308A Archerfield Road
BFL & TL Parrey	"Archerfield" House 1, 308B Archerfield Access
BFL & TL Parrey	"Archerfield" House 2, 308B Archerfield Access
BFL & TL Parrey	"Archerfield" House 3, 308B Archerfield Access
Sean Cargill & Leya Davidson	"Cheshunt Park" No. 1, 294A Barrys Access
Amanda Walsh and Adam Hampton	"Comleroi House", 16A Comleroi Road
Jason Connell	16B Comleroi Road
Karen Rawlings	1072 Jerrys Plains Rd
Steven Ringland	"Hicks Cottage", 1138 Jerry's Plains Road
Carina Moonen	Warkworth School House, 12 Simpson Street
WGU Engineering Pty Ltd	Blinmans Cottage - 698 Lemington Haul Road, Mt Thorley
Premier Group Pty Ltd	"Ollenberry", 1561 Lemington Road
Nicole Harvey	"Wandewoi" Cottage 2, 1622 Lemington Rd
Leslie Hamilton	Carrington West Cottage - 1635 Lemington Road, Lemington
William & Natalie Young	"Wandewoi" Homestead, 1686 Lemington Rd
Colinta Holdings Pty Limited	"Wandewoi" Cottage 1, 1686 Lemington Rd
Lisa Phipps & Steven Murphy	266 Dights Crossing
Steven Cox & Tracy Dady	880 Maison Dieu Road
Arnold Bailey & Gaile Miller	873 Maison Dieu Road
Michael Hassett	Cottage 1, 186 Knoddlers Lane
Michael Hassett	Cottage 2, 186 Knoddlers Lane
Vacant	Cottage 3, 186 Knoddlers Lane
Michael Hassett	Cottage 1, 152 Knoddlers Lane
Michael Hassett	Cottage 2, 152 Knoddlers Lane
Clayton Curnow and Alicia Bullock	"Simiana", 66 Long Point Rd
Leigh Johns & Andrew Cox	237C Long Point Rd
Timothy & Jodie Whitney	Kannar 'B', 121 Long Point Rd
Graham and Nicole Paul	131 Long Point Rd
Greg Turnbull & Lisa Ashpole	133 Long Point Rd
Nadine Gray	263 Long Point Rd
Tripple R Corporation	Carrington Stud Homestead - 1970 Golden Highway , Jerrys Plains
Warren, Cindy & Britney Dalley	Carrington Stud Cottage 1 - 1970 Golden Highway, Jerrys Plains
Tammy Ann Walters	Carrington Stud Cottage 2 - 1970 Golden Highway, Jerrys Plains
Paul & Ashleigh Nash	Carrington Stud Cottage 3 - 1970 Golden Highway, Jerrys Plains

Name	Address
Vacant	Carrington Stud Cottage 4 - 1970 Golden Highway, Jerrys Plains